



SMART PEOPLE
SUPERB TECHNOLOGY

Forbes Names SSC in "Top 100 Most Innovative Companies 2015"

SKYLINE®

Property Management and Accounting Solutions: Version 2017



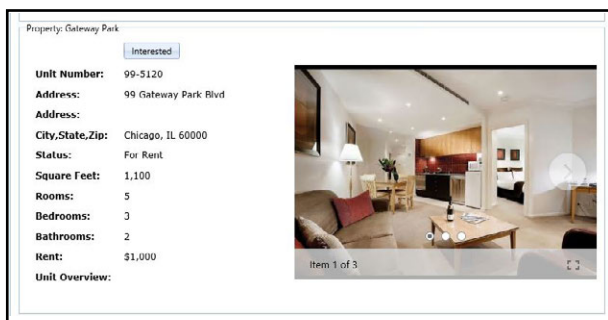
What's New for SKYLINE 2017

New SKYLINE Predictive Filter Search Typing

- In Occupant Information, Master inquiry, Cash Receipts, Vendor Information Screen, and Vendor Look Up Field
- Type value in column which reduces displayed data with each keystroke
- Search by Unit Reference Number, Occupant Name, Address, Phone Number, Doing Business As Name

New SKYLINE Prospecting Portal displays available properties, units and space via a link added to your website

- Provides Web Access to All Properties, Units and Space Available for Sale, Rent, Lease or Sub-Lease
- Once a Property, Unit, Space is labelled available in SKYLINE, the Property is included in the listing on the web



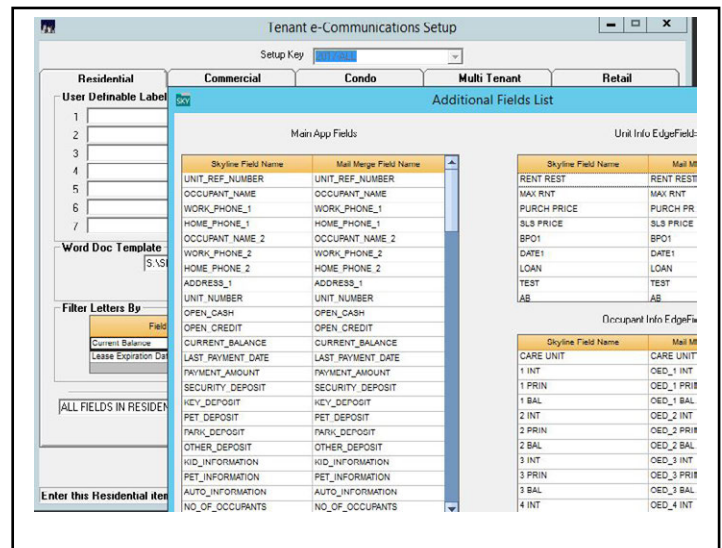
- Provides link to your listing website for visitor to enter their information which is directly added to SKYLINE Prospecting information in SKYLINE
- Designed to dynamically make all available listings web-presentable
- E-mail sent to a designated person letting them know there is a prospect interested in the listing
- Link to Premier Real Estate Marketing Sites such as Trulia & Zillow

New SKYLINE Password Features

- New Random Password Assigned at Login for Dashboard Tenant Portal
- New SKYLINE Feature will directly e-mail you your password
- New feature allows designated person ability to change SKYLINE user passwords in core SKYLINE

Improved SKYLINE E-Communications

- For each property type, all fields in Master Inquiry are available to be added to a merged document when using e-Correspondence



New scanning control allows for true multi-page scanning

- Ability for camera scanning in Core SKYLINE and Dashboard
- Pictures can be added via internet to work orders directly from a mobile device to the Dashboard

New SKYLINE Charge Code Activity Report allows look up by charge code for single or multiple tenant search within a date range

- Last page prints the totals of the charges selected

New SKYLINE Trial Balance Report with Drill Down into Opening Balances, Activity, and Ending Balance Detail

Create & archive individual letters to single tenant through mail merge button on Occupant Information screen

New Additional Features

- A new button is added to the List Vacant Units on the Occupant Information Screen
- New AP Invoice Search & Edit
 - Add Invoice number as a lookup box
 - Includes Security, fully drillable & editable
 - Edit current vouchers & invoices when zooming to the detail for centralized AP on single screen

- Enhanced SKYLINE Report allows option to clear fields when you print a report
- Send Laser Statements & E-Billing direct from Occupant Information & Master Inquiry to create one-off billing to a tenant
- Enhanced Budget includes Budget Notes on accounts in separate column
- New Checkbook Report Listing to view all check books on a grid & print checking account detail similar to AP invoice inquiry
- New Occupant Ledger Report includes Begin and End Date Range
- Can now view & edit subject line and verbiage in advance of sending when e-mailing work orders
- Auto-save PDF of Laser statement, Invoice and Late notice to each occupant's documents tab
- Detailed General Ledger now includes Invoice Distribution Description Line for reviewing CAM, Fixed Assets, etc.

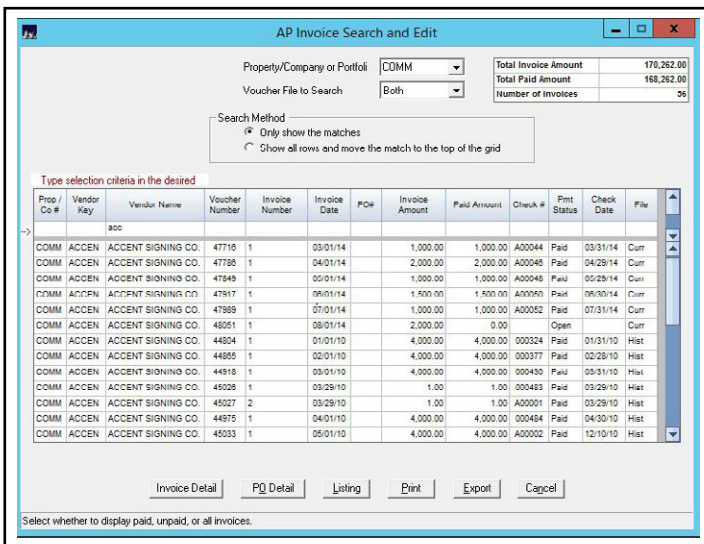
New SKYLINE Modules

- New SKYLINE Fixed Asset Tracking and Depreciation Calculation tool
- New SKYLINE Audit Master: generate an audit trail gain full monitoring over SKYLINE for specific operations, such as adds, changes, deletes or even simple reads
- New Schedule A Reporting feature for Insurance companies. Allows for tracking required Schedule A fields in SKYLINE for easy export to all Schedule A reporting tools

Technology Upgrade

New Updated Crystal Runtime .NET

- Major improvements to printing of reports & exporting
- Provides 64 bit compatibility for 64 bit programs



- New AP Void check to easily void a check from AP history
- New SKYLINE Group Setup allows for a setup of a range of units to be included as part of a group



For More Information on SKYLINE, please contact:

Mark Ziemba | t: +1-312-443-7531 | mziemba@sscinc.com | www.sscotech.com/skyline